



902-928 MHz Yagi Antennas

Frequency:902-928MHz, gain:17dBi 14dBi 11dBi 8dBi, It is designed primarily for directional applications, Point to multipoint systems . The wide band antenna ideally suited for 900MHz Motorola canopy ,Non Line of Sight (NLOS) ,RFID & SCADA ,Wireless Video Links & 900MHz Cellular ,Wireless LAN systems , 900MHz ISM Band applications

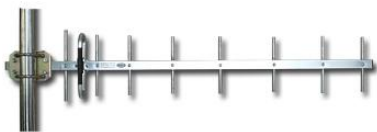
The Yagi directional Series antenna system offered by ZDA is constructed of 6061-T6 Aluminum for outstanding service life. Individual elements are braised to the main boom for permanent attachment. These antennas have high gain and good front to back performance to minimize external interference. They can be mounted in vertical or horizontal polarization.provides the user with anodized aluminum boom, solid elements,Heavy duty mounting hardwareWaterproof Design all-weather operation. these Yagi directional antenna features from ZDA are offered at cost-effective price.

Features:

- 17dBi High Gain
- all weather Anodized Aluminum construction
- Can be installed for either vertical or horizontal polarization
- Solid Aluminum elements
- Heavy duty mounting hardware

Applications :

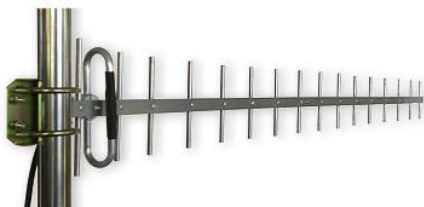
- motorola canopy
- Non Line of Sight (NLOS)
- RFID & SCADA
- Wireless Video Links & 900MHz Cellular
- Wireless LAN systems & Point to Multipoint applications
- 900MHz ISM Band



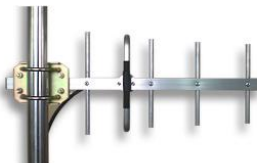
ZDADJ928-14YG



ZDADJ928-8YG



ZDADJ928-17YG



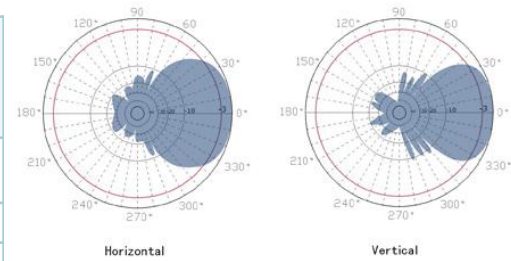
ZDADJ928-11YG



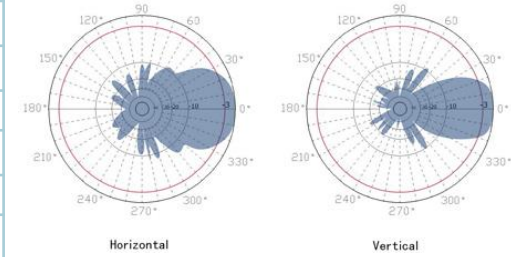


902-928MHz yagi Antennas

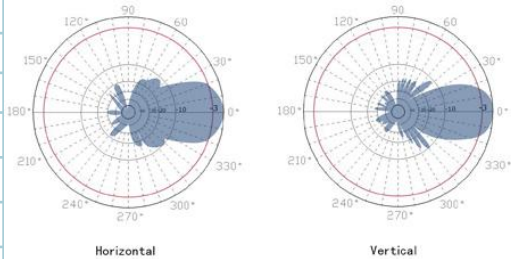
| 902-928MHz Yagi antenna series specifications | | | | |
|---|-------------------------------|-------------------------------|-------------------------------|-------------------------------|
| Model | ZDADJ928-8YG | ZDADJ928-11YG | ZDADJ928-14YG | ZDADJ928-17YG |
| Frequency Range | 902-928MHz | 902-928 MHz | 902-928 MHz | 902-928 MHz |
| Gain | 8dBi | 11dBi | 14dBi | 17dBi |
| Polarization | Vertical or Horizontal | Vertical or Horizontal | Vertical or Horizontal | Vertical or Horizontal |
| Horizontal Beam Width | 90 ° | 50° | 38° | 32° |
| Vertical Beam Width | 60° | 40° | 32° | 25° |
| VSWR | <1.5 | <1.5 | <1.4 | <1.4 |
| Front to back ratio | >12dB | >15dB | >15dB | >18dB |
| Input Impedance | 50 ohm | 50 ohm | 50 ohm | 50 ohm |
| Input Maximum Power | 100 W | 100 W | 100 W | 150 W |
| Lightning Protection | DC Ground | DC Ground | DC Ground | DC Ground |
| Connector | N female or customized | N female or customized | N female or customized | N female or customized |
| Size | 430mm | 450mm | 900mm | 1840mm |
| Antenna Material | Alu alloy | Alu alloy | Alu alloy | Alu alloy |
| Antenna Structure | 3 units | 5 units | 9 units | 17 units , two pieces design |
| Operating Temperature | -40to 85° C (-40to 185° F) | -40to 85° C (-40to 185° F) | -40to 85° C (-40to 185° F) | -40to 85° C (-40to 185° F) |
| Diameter of Installation Pole | 1.2-2.3in. (30-55mm) | 1.2-2.3in. (30-55mm) | 1.2-2.3in. (30-55mm) | 1.2-2.3in. (30-55mm) |
| Weight | 1.21 lbs. (0.55kg) | 1.32 lbs. (0.6 kg) | 2.04 lbs. (0.93 kg) | 3 lbs. (1.36kg) |
| Wind Loading: 100MPH | 4lb. | 6.6lb. | 8.6lb. | 15.2lb. |
| 120MPH | 7lb. | 8.6lb. | 10.2lb. | 19.2lb. |



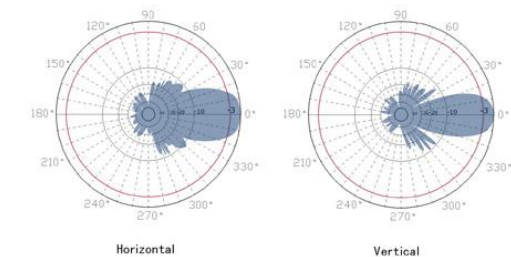
ZDADJ928-8YG Patterns



ZDADJ928-11YG Patterns



ZDADJ928-14YG Patterns



ZDADJ928-17YG Patterns